



The Trainwire



Inside this issue:

Scheduled events	2
Meeting Minutes	3
Meeting Pictures	4
BOD Minutes	5
Prom Day Pictures	6
On the Road	7
On the Road cont...	8
Bulletin Board	9
Election Process	10
Bluegrass Museum	11
Museum cont...	12
Chinese Raffle	13
Railfest Flyer	14
Officer Info	15
Last Page	16

Division 5 Christmas Party

When: Friday, January 10, 2014 at 6:30 pm
Dinner served at 7:00 pm

Where: Hambden Town Hall (our normal monthly meeting location)
13887 GAR Highway (Route 6)
Chardon, OH 44024

(Located on Rt. 6 between the intersection of Rt. 608 and Rt. 166 next to Hambden Elementary School east of Chardon.)

Entertainment: Catered Buffet Dinner
Chinese Gift Exchange
Lucky Loser's Raffle Drawing
Program

This year's costs are as follows:

\$8 for Division 5 member
\$8 for one guest of a Division 5 member
\$10 for each additional guest or non-Div 5 member

Advance sign-up and payment is required. Cut-off date is January 4th. There will be a sign-up sheet at the December 6th Div 5 meeting. Bonnie Lette will be collecting the money for this event at the meeting. If you can't make it to the meeting, make your reservation by calling Dale Smith at 440-286-4932 or e-mailing to Dale.Smith@mcr5.org. Payment is needed by January 4th.



Division 5 Losers Raffle at the Christmas Party

At the end of each year, we take all the losing raffle tickets from our Division meetings since the beginning of the year, dump them all together, and then draw 18 tickets. The prizes are Division Award Certificates in various dollar amounts, depending on the order your name is drawn. Thus, you have a second chance of winning something with your losing raffle tickets! Only one prize per member, though. Once your name has been drawn, you are not eligible for another prize. You do not have to be present to win. Only Division 5 members are eligible.

UPCOMING DIVISION 5 MEETINGS

Division 5 monthly meetings normally start at 7:30 PM.

Location: Hambden Town Hall
13887 GAR Highway (Route 6)
Chardon, Ohio

Located on Rt. 6 between the intersection of Rt. 608 and Rt. 166 next to Hambden Elementary School east of Chardon.

December 6th, 2013

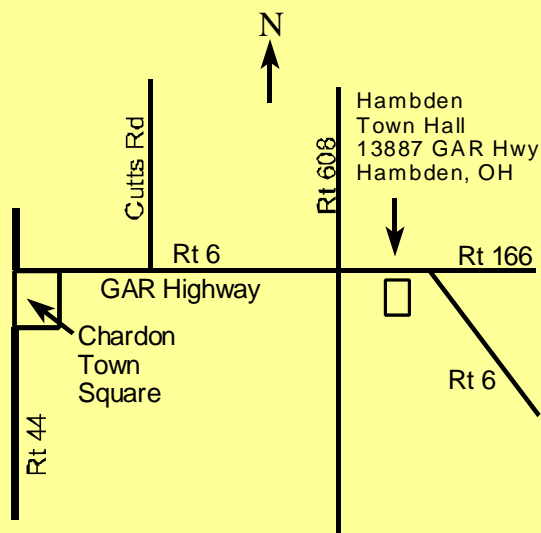
Location: Hambden Town Hall
Program: Wall mounted benchwork (*Robert Gittinger*)
Bring & Brag: Anything goes

January 3rd, 2014

No Meeting this Month.

February 7th, 2014

Location: Hambden Town Hall
Program: Sweden Railroad Museum - Ken Stroebel
Bring & Brag: TBA



Map to Hambden Town Hall

SCHEDULED EVENTS

Country Lights November 30 to
Farmpark December 23
Kirtland, Ohio (5 pm - 9 pm)
Lake-Geauga HO Modular Group LLC 11/30-12/13/13
Lake Erie N-Scale Society 12/14-12/23/13

2014

Snowshoe Train Show January 4
UAW Hall (See flyer on page 17)
Parma, Ohio (10 am - 3 pm)

Division Holiday Party January 10
Hambden Town Hall (RSVP by Jan. 4th)
Hambden, Ohio (6:30 pm)

BOD Meeting January 13
Hambden Town Hall
Hambden, Ohio (7:30 pm)

Railfest 2014 March 15 & 16
Lakeland Community College (See flyer on page 14)
Kirtland, Ohio (10 am - 4pm)

Program for December 6th, 2013

December's program will be a presentation on wall mounted benchwork. Wouldn't it be nice to run trains and still have most of the room usable for other things? Bob Gittinger will demonstrate two ideas for those who want a train layout without using all of the space in the room. There will be a short slide presentation followed by a live demonstration explaining assembly techniques.

Division 5 Meeting Minutes

November 1, 2013

Meeting was called to order by Superintendent Rob Bowers at 7:30 pm at Hambden Town Hall. There were 29 members and 4 guests present.

Correction to the **October BOD minutes**: the section that talked about polling NMRA members in a local zip code incorrectly stated it was the Solon zip code. It should have read Aurora zip code.

Reviewed last minute items for this year's **Promo Day** which is the day after the meeting.

Discussed the **track cleaning blocks** for sale by another MCR division.

Discussed the **diorama challenge** put on by another MCR division and whether we would like to do some form of this in Division 5.

We need **meeting programs** for the upcoming year. January is our holiday party in place of the meeting. We have a program for February. We won't have a formal program in May since we will be at Farmpark setting up modules.

Ted Wiese is building one of the Division O scale sugar houses and ran into a problem. He would like to talk to someone who has built one of them.

Dave Neff's request at the last meeting for some pictures of the NYC Collinwood Yard had some success. He received some pictures and is in contact with a couple of people who might have more.

The HO module group is looking for help during their set up at Farmpark for this year's Country Lights display. The display goes for 25 days and they need lots of help. They are recruiting some of the Boy Scouts that participated in the Railroading Merit Badge workshop. They could use help from Division 5 members. The display will be in the Arena building this year, which is a new location for us. If you can help, contact Sam Monturi on his cell phone at 602-316-9184.

2014 Convention Update: Putting together the tour schedule for the February issue of the NMRA Magazine. Online tour signup may start as early as January, so, if you haven't registered for the convention and want to go on any of the tours, you need to register before the end of this year. Some of the big prototype tours will be the Ages Of Steam Roundhouse and the GE factory in Erie. Since we have three local divisions jointly putting on the convention, the profits will be split based on volunteer hours per division. We need lots of people from Division 5 to help out before and during the convention to do our share.

Bring & Brag: Theme – MOW or unusual rolling stock

Dave Neff
Bill Burger

Matt Kross
Paul Chapple

Tom Carr
Ken Stroebel

Don Bittner
Rich Kacprzak

Program: Lee Sheffield of Division 4 put on a clinic about DCC decoder installation. This is a course that Lee created for the NMRA Education and Training Program. The clinic focused on HO models and covered the basic process along with lots of help hints about sources of parts, tools you will need, and tricks to make things easier.

Submitted by:

Matt Kross – Division 5 Clerk

Pictures from November Meeting.

Photo by: Ron Sieloff



Next Division 5 Meeting - December 6, 2013.

Division 5 BOD Meeting.

November 11, 2013 7:30 pm

A **Division 5 BOD meeting** was held on November 11, 2013 at Hambden Town Hall. In attendance were Rob Bowers, Bonnie Lette, Wayne Lette, Matt Kross, Bob Frieden, Bob Gittinger, Tom Pescha, and Don Bittner.

The **Division 5 holiday party** will be held Friday January 10, 2014 at Hambden Town Hall. The caterer has not been selected yet.

The Board worked through and approved the **2014 Division 5 budget**. The finalized budget will be issued to BOD members at the end of the year after the December 2013 financial numbers are determined.

Reviewed the results of **Promo Day 2013**. It was estimated that between 150 and 180 people attended. There were a number of people that drove several hours to be there (Marietta, Medina, Akron, western New York). We did a lot more advertising this year along with an e-mail blast. We believe changing the name to "How To Build A Model Railroad" helped inform people what the event was about.

It was proposed that we create some small (24" x 24"), scaled down **demo modules** that show how to build various types of benchwork. These would be used during Promo Day to show people the various techniques involved. Wayne Lette will put a proposal together.

We are looking into getting some **Division 5** business cards printed. We need to update the information that was on our old cards.

Every year we have **outside model railroad organizations** asking Division 5 to donate funds to their group for various projects. The BOD allocates a set amount of money each year for donations and project funding to promote the hobby. Just because the money is allocated does not mean that it will be used for the year. Also, just because an outside group requests financial support does not mean they will receive it. Each request is considered individually. The Board is considering capping funding requests at \$450 maximum per group per year. Since there is a fixed amount of money allocated, the more requests received, the less each group will receive.

Railfest 2014 status: Invitations to Railfest 2014 are being prepared for mailing. Due to a tripping incident on the tarp in the gym, no one will be allowed in the gyms until the tarps have been completely taped. This may delay when we can start setting up on Thursday before the show. Also, due to stricter fire code enforcement, the lobby displays will be greatly limited to maintain a clear exit path.

The BOD agreed to proceed with purchasing the minimum order for the track cleaning blocks for N, HO, and O. Once we get these, they will be available for purchase from the Division 5 Company Store.

It was decided that we will not purchase a spare bulb for our **Division 5 video projector** at this time.

The **Division 5 Nominating Committee** needs to be formed to come up with the slate of candidates for our 2014 Division 5 elections.

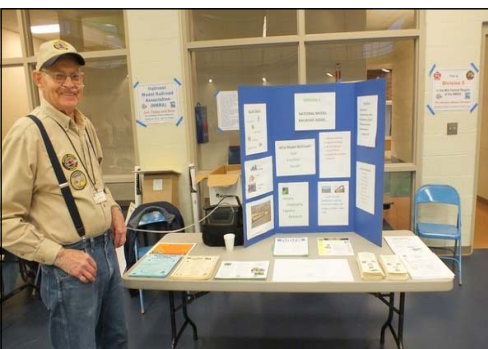
NOTE: There is no BOD meeting in December. The next Division 5 BOD meeting will be January 13, 2014 at 7:30 pm at Hambden Town Hall.

Submitted by:

Matt Kross – Division5 Clerk

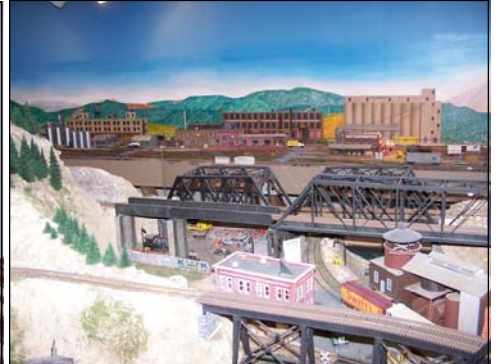
Pictures from Promo Day.

Photo by: Tom Pescha



On the Road Again.

By: Len Kessler



Once again the NETS model railroad group was on the road again. Shortly after our first road trip, we were

invited to view an operating HO layout in Olmsted Township. It was at the home of NMRA Division 4 member Paul Novak. Paul and his two sons, Paul Jr.

and Phil, kindly invited us to tour their superbly detailed layout. The first thing that stands out immediately is that over ninety per cent of the track and switches are

hand laid. The layout is multilevel with numerous tunnels and distinctive scratch built bridges and trestles. You can't help but notice the large and



complex refinery, the coal mine, a key logging operation and the extraordinary detailed junk yards. In addition you will view skillfully detailed cities and

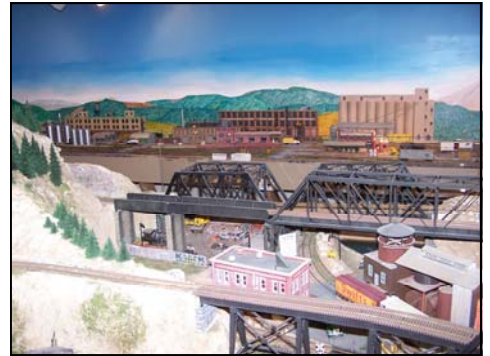
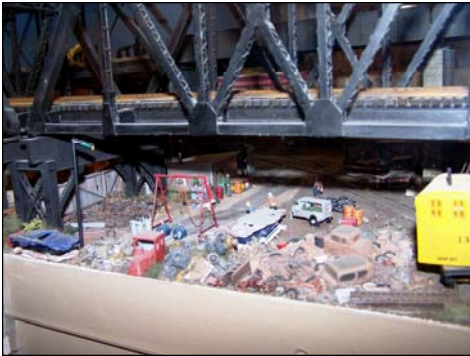
towns, and several interesting industrial sidings. If trolleys are your interest, this layout has a stand alone complete working trolley circling its own city

with an eye catching cathedral in the middle and has the unique name, "Yipahooey Valley". The trolleys are powered by their own active overhead wires.

The 1940's - 50's era railroad is easily viewed because of the higher than normal height of the layout. From this vantage point, one can easily look right into the



On the Road cont.....

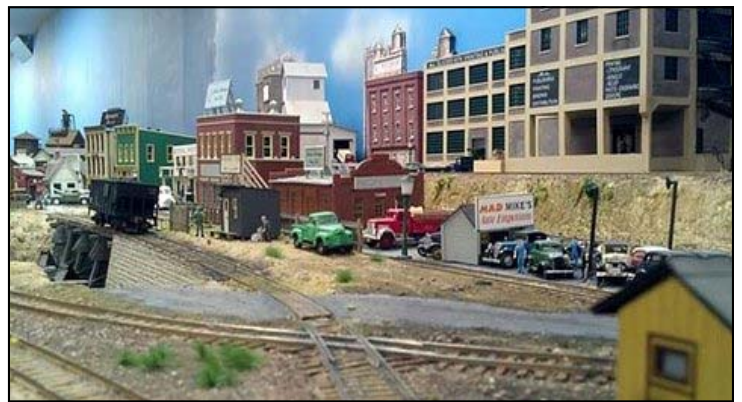


windows of most of the well constructed buildings and be amazed at the elaborate detailing of the interiors and the distinct window signage. Most of the buildings and rolling stock were expertly weathered adding to the reality of the exhibits. For operation purposes the layout has two

medium size marshaling yards and one large staging yard. At my request, the owner gave me a one on one demonstration of an ordinary work schedule of a particular train from its starting point in the staging yard while swapping cars at various sidings along the

way. I find these types of maneuvers the most interesting aspect of model railroading. After our tour, our hosts provided refreshments and plenty of simulating conversation in a lounge area adjacent to the layout room. I would personally like to thank Paul, Paul Jr. and Phil Novak for their

hospitality and generosity in sharing their magnificent layout with our group. I hope that I will have a chance to participate in one of their operating sessions in the near future. Gentlemen, job well done.



Businesses Accepting Division 5 Certificates

The businesses listed below are currently accepting Division 5's award certificates:



Stewart's Hobbies & Collector's Toys
Hobby Town USA
Train Specialty Company
Toy-N-Hobby Headquarters

Willoughby, Ohio
Mentor, Ohio
Chardon, Ohio
Geneva, Ohio



Please support these dealers!

Bulletin Board

Attention Promo Day 2013 Presenters

If you put on a demo at Promo Day and you purchased materials to use in that demo, please fill out a Division 5 Expense Form (available on the website) and turn it into Rob Bowers by the December Div 5 membership meeting. You will be reimbursed for the cost of the items you used.

Nominating Committee Volunteers Needed

2014 will be an election year for Division 5 so we need to form a Nominating Committee to put together a slate of candidates. We are looking for one representative from each of our three counties. Your job would be to review Division 5 members within your county and determine if they would be good candidates for office. You would then need to contact them to see if they would be willing to run.

If you are interested in being on the Nominating Committee, please contact Superintendent Rob Bowers.

Refer to the section elsewhere in this Trainwire on the Division 5 Election Process for more details on the Nominating Committee duties.

Division 5 2014 Elections

This coming spring will be election time again for Division 5.

There are 2 elected officers in the Division:

- Superintendent
- Assistant Superintendent

Elections are held every two years in the Spring of the even-numbered years. Only Division 5 members may hold office. Terms are two years in length and are limited to 4 consecutive years (two terms) in a row in the same office. If a member has been in a position for two consecutive terms, they can be elected for that position again after they have been out of that position for one term.

If you are interested in running for Superintendent or Assistant, please contact a member of the Division 5 Nominating Committee.

Division 5 Election Process

The following are excerpts from our Division 5 Regulations explaining the election process:

The Division Nominating Committee shall be appointed by the Superintendent. It shall be composed of a Chairperson and two other members. Each person on the committee shall be from a different county of the Division. The current Superintendent shall not serve on the committee, nor sit with it during its deliberations. The Nominating Committee will report the nominations to the Clerk and the membership.

Members of the **Nominating Committee** may not nominate themselves for any office, including re-election for office.

The **Teller** shall report the results of the election to the officers of the Division and to all nominees prior to the May meeting. The results are to be announced by the Teller at the May meeting. Those elected shall be invited to participate in the May Board of Directors meeting. The newly elected officers will assume office June 1st.

Nominations for Division 5 offices may be made by a petition signed by two members and the nominee and submitted to the Nominating Committee. The signatures must be legible and the member's NMRA membership number and their membership expiration date must appear with the signature. The petition shall state for what office the candidate is seeking nomination. No candidate can be nominated for more than one office in an election.

Nominations from the Nominating Committee shall be presented at the January meeting of the election year. Nominations of members from the floor shall be presented at the February meeting of the election year. Nominations from the floor shall be by a motion and must be seconded. Nominees cannot nominate themselves.

No member shall be nominated to an elective office without their approval.

Election for **Division officers** shall be conducted by mail ballot. Nominees for office and qualifications for same shall be included in the March issue of the Trainwire for elected office balloting.

The Bluegrass Railroad Museum

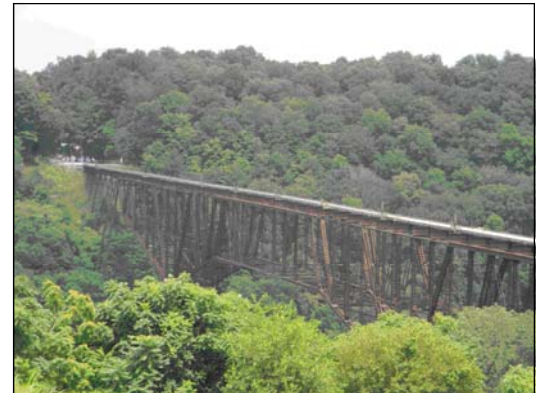
By: Bruce Lutheran

The Bluegrass Railroad museum, located in Versailles, Kentucky, was the site of a recent road trip. I was on vacation this year, and as is my usual custom, I always try

and find a local railroad to visit. Well this year was no different, as I went down south this year and on the way back, I stopped at the Bluegrass Railroad Museum. The museum is located just west of Lexington Ky., right off

I-75, so if you are making a trip down south, it is a nice stop. If you get lucky enough, you'll arrive on a Saturday or Sunday, before 2:00 and catch the ride. The ride takes you from the station/museum to Young's High Bridge. The Train is

pulled by an N&W GP-9. The engine pulls several passenger coaches on the excursion, specially painted for the museum (see below)



The ride is 11 miles round trip, about 90 min long, depending on the length of time spent at the bridge. On the way you ride thru the beautiful Bluegrass Country. Along the way, you pass over several small Trestles' (small bridges). The ride

is very relaxing and Seeing Young's High Bridge is very exciting. The Bridge crosses the Kentucky River. The bridge was built in 1889. Due to the age of the bridge, and the fact that it has never been modified or strengthened, it is not

crossed. The several pictures that follow show the bridge. After the return trip, I went into the Museum. It is housed in a newly rebuilt depot.



Upon entering the museum, you notice several nice displays, built by friends of the museum. There is a nice railroad layout and several display cases of some traction equipment. There is a nice static display of the "golden spike ceremony" (right).

As you walk past the sales area, you walk into the main part of the museum. You



(Continued on page 12)

The Bluegrass Railroad Museum cont.....

(Continued from page 11)

can't help but notice the model of Young's High Bridge across the back wall. I took a picture

of a picture of the bridge from 1889, showing the first train passing over the bridge (see below)

I have included photos of several of the display cases showing place-setting from both the SR (southern Railway) and the C&O. These

include many different objects from both railroads (see below)



Part of the museum is also dedicated to the L&N (Louisville & Nashville railroad.). I took the following photo of an "excursion to Mammoth cave. Note the price for 1911 (see below)



Along the adjoining wall, you can't miss the large water pipe hanging from the ceiling. I took the following shot with a kid in it, to show the size comparison (see below)



In one corner is a set of "track tools" used on the railroad (see below)



Now that the crowds were gone, I worked my way outside to the motive equipment. There were a couple of cabooses,

representing models we all have on our railroads. (see below)



Further down the line there were several passenger cars with a diesel sandwiched between them. (see below)



The Bluegrass Railroad Museum cont.....

One of the static displays you had was of an arch bar truck. Now I have been to many different displays, but, this was the first time I have ever seen the truck

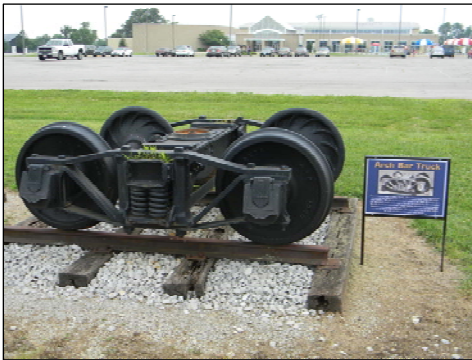
displayed by itself (*see below*)

Below is a shot of a powered spike puller: I pulled back to the parking lot and took the following shot of

the static display of the MOW equipment, including the little speeder (*see below*)

I took the last shot as I pulled away from the Museum:

So if you ever are heading south on I-75, take a quick stop, enjoy a nice train ride and visit the Bluegrass Railroad museum.



Chinese Gift Exchange Rules for the Christmas Party

For those people wishing to participate in the Chinese Gift Exchange, bring a **new or unused model railroad related gift** costing approximately \$15 to the party. Mark on the gift what scale it is such as "HO", "N", "Any", etc.

Note: Only those bringing a gift may participate!

All those participating will draw a number out of a hat. The person with #1 picks a gift from the table, opens it, and shows it to everyone. The person with #2 can then either pick a gift from the table or take the gift from #1. If he takes the one from #1, then #1 gets to pick another gift from the table. The person with #3 can then either pick a gift from the table or take the gift from either #1 or #2. If someone has their gift taken, they get to pick a new one from the table or take one of the gifts from someone else. They cannot take back the gift that was just taken from them! This continues with each person having the choice of either picking a gift from the table or taking a gift from one of the other participants until everyone has a gift. At the end, the person with #1 then gets to trade their gift with any of the other people. If you want, you can bring more than one gift so that you can get additional picks. It is a lot of fun and everyone is encouraged to participate!



Railfest 2014



Saturday and Sunday
March 15 & 16, 2014

10 am to 4 pm
Buy – Sell – Trade



Lakeland Community College

Kirtland, Ohio 44094
State Rt. 306 at Interstate 90 – exit 193

Operating Layouts

N Scale Layouts
(LENS)

HO Scale layout
(LG HO G)

S Scale & American Flyer
(Cuyahoga Valley S Gauge Association)

Lionel O Gauge
LGB G Gauge

Live Steam Display
(Lake Shore Live Steam)

Features

- Dealers
- RR Flea market
- Exhibitors
- Operating Layouts
- Video Tapes
- Historical Displays
- Train Ride Info
- Food Service Available

Admission	\$7.00
Two Day Pass	\$12.00
Family (couples)	\$12.00
Family (max)	\$12.00

(Adults with Children under 18)

Food Service Available at reasonable prices

For Information Write:

NMRA MCR Division 5
PO Box 5081
Mentor, Ohio 44060

Phone: (440) 357-8890
Phone: (440) 478-6661

Email: railfest@mcr5.org



Free Parking

Free Shuttle Bus
9:30am – 4:30pm

Presented by

National Model Railroad Association

MCR – Division 5 Event
Celebrating 30 years at Lakeland
Visit us at www.railfest.org

Largest continuous running train show in OHIO!



Team Track**www.MCR5.org****Division 5 Officers** (Terms expire June 2014)

Superintendent	Rob Bowers	440-942-3039
----------------	------------	--------------

Super@MCR5.org

Asst. Superintendent	Dave Neff	440-269-1229
----------------------	-----------	--------------

AstSuper@MCR5.org**Division 5 Directors:** (Terms expire June 2014)

Don Bittner	440-257-7555	Robert Gittinger	440-525-0237
Wayne Lette	440-298-3075	Tom Pescha	216-470-5780

Division 5 Board of Directors: BOD@MCR5.org**Division 5 Appointed Positions:** (Terms expire June 2014)

Treasurer	Bonnie Lette	440-298-3075
-----------	--------------	--------------

Treasurer@MCR5.org

Clerk	Matt Kross	440-729-3045
-------	------------	--------------

Clerk@MCR5.org

Railfest Chairman	Jim Wendorf	440-357-8890
-------------------	-------------	--------------

Railfest@MCR5.org

Promo Day Coordinator	Rob Bowers	(440) 942-3039
	Bob Frieden	

PromoDay@MCR5.org

Achievement Program	Mike Buehner	440-428-0137
---------------------	--------------	--------------

AP@MCR5.org

Contests (Open Position)

Contest@MCR5.org

Auditors	Dennis Lloyd	440-255-2530
	Tony Spena	

Audit@MCR5.org

Trainwire Editor	Lenny Kessler	440-478-6661
------------------	---------------	--------------

Trainwire@MCR5.org

Refreshments	Doug Riedel	440-286-7341
--------------	-------------	--------------

Refreshments@MCR5.org

Membership Roster	Matt Kross	440-729-3045
-------------------	------------	--------------

Membership@MCR5.org

Webmaster	Wayne Lette	440-298-3075
-----------	-------------	--------------

Webmaster@MCR5.org

Company Store	Ted Wiese	440-256-5212
---------------	-----------	--------------

CompanyStore@MCR5.org

Bring & Brag (Open Position)

Layout Tours	Mike Buehner	440-428-0137
--------------	--------------	--------------

layouttour@MCR5.org**NATIONAL CONVENTION**

**THE
CONVENTION
JULY 13-20, 2014**

www.2014cleveland.org**Bad Weather Closings**

Even though the weather is still very nice and warm, soon it will change to winter with cold and snow. In the event that it becomes necessary for us to cancel our meetings, it will be broadcast on Ch 5, WEWS.

So if the weather looks bad, and you want to know if the meeting has been cancelled, check on Ch 5 or www.newsnet5.com, click on the weather tab, then the closing tab to see if we are listed.

**January Trainwire Deadline
December 15th.**

The Trainwire Newsletter

12049 Sperry Road

Chesterland, Ohio 44026

Publication of Division 5

“The Western Reserve Division”

Mid Central Region

National Model RR Association, Inc.

A Non-Profit Educational Organization

December, 2013

Electronic Version

**Division 5 Membership
as of November 1st, 2013**



85

The Trainwire

The Trainwire is an official publication of Division 5 “The Western Reserve Division”, Mid Central Region, of the National Model Railroad Association. It is published approximately once a month and mailed to all NMRA members residing in Lake, Geauga, and Ashtabula counties (Ohio) free of charge, as long as the

Division has funds for mailing. Others wishing to receive it may do so for the annual fee of \$12.00 for a mailing or it is always available on the website (FREE). Information regarding *The Trainwire*, Division 5, or the NMRA may be obtained by writing to 3257 Center Road, Perry, Ohio 44081 or sending an e-mail to

Trainwire@MCR5.org. The Trainwire and Division 5 activities are funded by flea markets, raffles, contributions, and donations. All comments and opinions are welcome. Those views expressed in *The Trainwire* do not necessarily reflect the policies or opinions of the NMRA, the Mid Central Region or Division5

The Western Reserve Division 5



www.mcr5.org

A non-profit educational organization



Trainwire Editor:	Lenny Kessler	3257 Center Rd. Perry, Ohio 44081	440-478-6661	Trainwire@mcr5.org
Superintendent:	Rob Bowers	7257 Hayes Blvd. Mentor, Ohio 44060	440-942-3039	Super@mcr5.org
Asst. Super:	Dave Neff	5479 Chestnut Hill Dr. Willoughby, Ohio 44094	440-269-1229	AstSuper@mcr5.org
Treasurer:	Bonnie Lette	17541 Thompson Rd. Thompson, Ohio 44086	440-298-3075	Treasurer@MCR5.org
Clerk:	Matt Kross	12049 Sperry Road Chesterland, Ohio 44026	440-729-3045	Clerk@mcr5.org



SnowShoe Train Show

Saturday, January 4, 2014

Wind, nor Rain, nor Snow will kept a train fan from a good train show!

UAW Hall, 5615 Chevrolet Blvd., Parma, Ohio 44130



10:00 am to 3:00 pm

Admission: \$6.00, Kids under twelve Free
Free Parking



This is an ALL Gauge Show with over 150 tables of trains and toys.

Operating Layout of several gauges

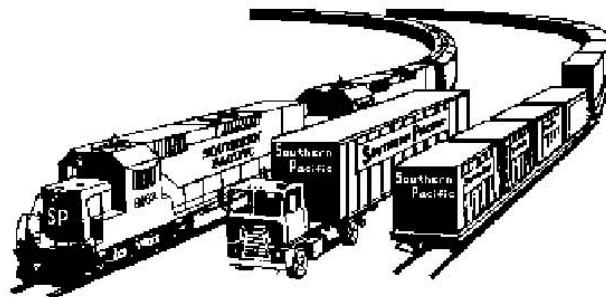
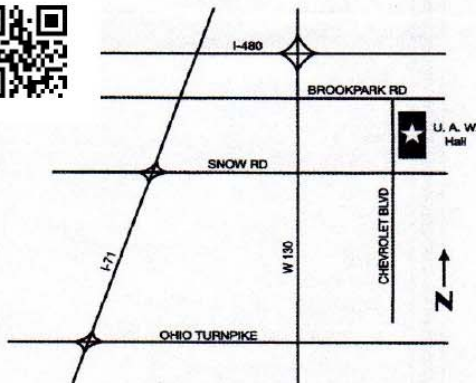
Good Food at reasonable prices

Free Parking



For Table Info call:

216-662-6928 or 440-526-9864



Show sponsored by Cuyahoga Valley S Gauge Association (www.cvsqa.com)