



# The Trainwire



## Inside this issue:

<b>Scheduled events</b>	<b>2</b>
<b>Meeting Minutes</b>	<b>3</b>
<b>Bulletin Board</b>	<b>4</b>
<b>BOD Minutes</b>	<b>5</b>
<b>Field Trip</b>	<b>6</b>
<b>Field Trip cont...</b>	<b>7</b>
<b>Railfanning</b>	<b>8</b>
<b>TCA Flyer</b>	<b>9</b>
<b>Toy Show Flyer</b>	<b>10</b>
<b>Officer Info</b>	<b>11</b>
<b>Last Page</b>	<b>12</b>
<b>Antique Toy Flyer</b>	<b>13</b>

## Superintendent's Report

### Back to the Future---or Vice-Versa

I take us back to those thrilling days of yesteryear----no, not the cowboy TV programs of our youth---but the Lionel and American Flyer trains of our model railroad origins. There were plenty of operating accessories to be had, especially with Lionel---barrel loader, coal loader, milk can loader, cattle ramp, searchlights, operating crossing gates, etc, etc. You get the picture.....ANIMATIONS galore!

Our modern model railroad layouts of today---in all gauges--- are beginning to be populated now once again with animated projects---sophisticated operating signal systems, automatically triggered lighting and sound displays, a few new operating accessories and more to come. All made possible by miniaturization and microprocessor control circuitry, such as with Circuitron, Minitronix, Arduino, Raspberry Pi, etc. Animations liven up our simple train run-

ning, operating sessions, and public displays, creating more interest than just a static scene.

For our December meeting in just a few days after reading this issue of the Trainwire - we are featuring **Animations** for Bring n Brag. You can bring some gadgetry in you haven't yet installed on your layout and discuss it. Alternatively, for something you already have on your layout and of course it's 'fixed' and you can't bring it in - take a photo and discuss it: how you installed it, etc. Talk a bit about the wiring, the controls, what you used, mounting / adhesive / installation techniques, etc - whatever is applicable. Even simple items such as grade crossing lights, welders, special sounds, flashing vehicle lights, etc can be good subjects. Other examples - has anyone using the new Woodland Scenics Just - Plug lighting system? Who can talk about their installed signaling system? Anyone has experience



Dave Neff - Superintendent  
Division 5  
NMRA - Mid Central Region

with the new Broadway Limited sound rolling stock? (We'll exclude locomotive sound decoders for this meeting---but pick it up as a focused topic early next year). There are always good ideas and information to share which can benefit our members on the topic of animations, and how to make our pikes more interesting - so plan to participate! We have plenty of gift certificates to hand out! - Dave



## UPCOMING DIVISION 5 MEETINGS

Division 5 monthly meetings normally start at 7:30 PM.

**Location:** Hambden Town Hall  
 13887 GAR Highway (Route 6)  
 Chardon, Ohio

Located on Rt. 6 between the intersection of Rt. 608 and Rt. 166 next to Hambden Elementary School east of Chardon.

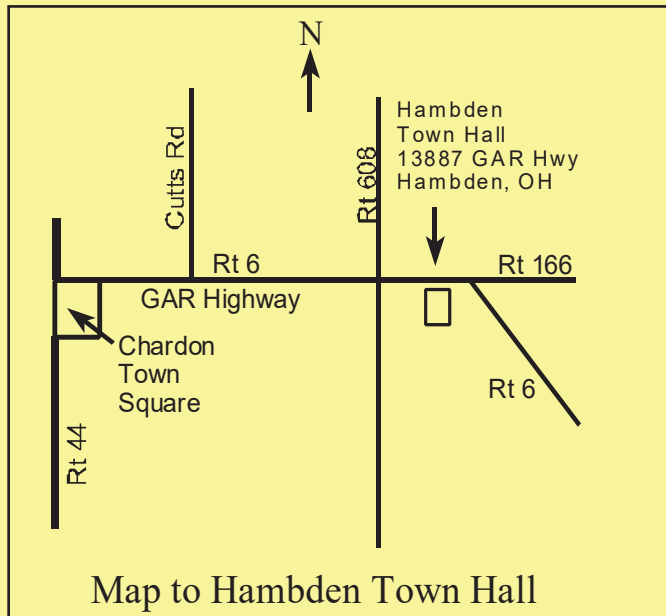
**December 2nd, 2016**

Location: Hambden Town Hall  
 Program: Slide show of Entertainment Junction  
*(Craig Potter)*  
 Bring & Brag: **Animations**

**January, 2017 Meeting** has been cancelled.

**February 3rd, 2017**

Location: Hambden Town Hall  
 Program: **TBA**  
 Bring & Brag: **TBA.**



Map to Hambden Town Hall

## SCHEDULED EVENTS

**TCA Train Meet** **November 26**  
 UAW hall  
 5616 Chevrolet Blvd. *(flyer on page 9)*  
 Cleveland, Ohio 44077 **(10:00 am - 3:00 pm)**

**Lakeshore Model RR Assn** **December 3**  
**Open House**  
 Eastminster Presbyterian Church  
 2320 E Lake Rd, *(flyer on page 4)*  
 Erie, Pennsylvania 16511 **(10:00 am - 4:00 pm)**

**Christmas Train Show** **December 18**  
 Lakeland Community College *(flyer on page 10)*  
 Kirtland, Ohio **(10:00 am - 3:30 pm)**

- 2017 -

**Antique & Collectible Toy Show** **January 7**  
 Lakeland Community College *(flyer on page 13)*  
 Kirtland, Ohio **(9:00 am - 2:00 pm)**

**Division 5 BOD Meeting** **January 9**  
 Hambden Town Hall  
 Hambden, Ohio **(7:30 pm)**

**Division 5 Holiday Party** **January 14**  
 Hambden Town Hall  
 Hambden, Ohio **(Noon, dinner at 1 pm)**

# Division 5 Meeting Minutes

November 4, 2016

The **November 4, 2016 membership meeting** was called to order by Superintendent Dave Neff at 7:30 pm at Hambden Town Hall. 29 members and 2 guests were present.

Reviewed the Division 5 **“How To Build A Model Railroad”** day plans for the following day (Saturday November 5). Everyone was encouraged to come and help.

It was noted that the recent N-Trak Newsletter featured an article about Lake Erie N-scale’s **reverse loop modules** and how they allow for small, easy to setup modular layouts for small venues or one day shows. Division 5 helped fund LENS to build these modules.

Jim McCallum provided information about **three railroad related trips** being sponsored by the Cuyahoga Valley Scenic Railroad. These trips are being done through Great Day Tours and detailed information is on their website: [GreatDayTours.com](http://GreatDayTours.com).

**Trip 1:** May 6-7, 2017 Travel westward to Mad River Railroad, ride on Blissfield dinner train, and visit the Henry Ford Railway.

**Trip 2:** June 17-18, 2017 Ride on the Oil Creek & Titusville Railroad in western PA, stay overnight in a cabooses motel.

**Trip 3:** June 29-July 1, 2017 Central and eastern PA – Strasburg museum, Steam town, and more.

Division 5 will have a table at the **Erie train show** on Sunday, November 6, 2016 to promote our division and the NMRA.

Division 4 is hosting **layout tours** on Sunday November 13 and Saturday November 19, 2016.

The **December program** will be a presentation on EnterTrainMent Junction by Craig Potter.

The Division 5 **Holiday Party** will be held the second Saturday of January, 2017 at Hambden Town Hall.

We need **meeting programs for 2017**. Talk to Superintendent Dave Neff if you have something you would like to present.

We are bringing the collection of **NMRA Convention Clinic DVD’s** to every monthly meeting. If you would like to borrow some to view, see Randy Hahn to check out the ones you want. The list of topics is on the Division 5 website.

**Bring & Brag:** Theme – *“Cabooses”*

Dave Neff	Matt Kross	Bryan Persing	Don Thomas	Dave Metzger
Bill Osborne	Bruce Lutheran	Bill Berger	Paul Chapple	Dennis Lloyd
Spencer Coglan				

**Program:** Meeting attendees moved from Hambden Town Hall to the home of Harley Smith where an operating session was conducted on Harley’s **Ohio Northern HO railroad**.

*Submitted by*  
**Matt Kross – Division 5 Clerk**



## Division 5 Holiday Party

The Division 5 Holiday Party this year will be held **Saturday, January 14**, at Hambden. Social hour 12 noon, 'dinner' at 1 p.m., followed by Chinese Gift Auction and Loser's Raffle. Cost \$5 per person, guests welcome. Payable at December 2 meeting if at all possible or send a check to Bonnie.

You can pay at the door on Saturday Jan. 14, only if you have RSVP'd by January 7 latest to Bonnie or Dave so that we can plan for the meal.

The reasons for the change of date, day, and time:

First Friday too soon after New Years

Saturday afternoon easier daylight drive-time for all, including our far eastern members in Ashtabula and Erie.

Dave, *Division 5 Superintendent*



# Lakeshore Model Railroad Association



*Presents Their First Annual*

# CHRISTMAS OPEN HOUSE

*~ Fun For The Whole Family ~*



Santa Claus ~ Operating Train Layouts ~ Presentations

Norman Rockwell Train Raffle - Food & Refreshments



**Saturday, December 3, 2016**

**From 10 to 4**

**ADMISSION DONATION**

\$2 Per Person - With One (1) Non-Perishable Food Item

\$3 Per Person - With-Out Food Item

Children Under 12 - FREE

**EASTMINISTER PRESBYTERIAN CHURCH  
2320 East Lake Road  
Erie, PA 16511**



# Division 5 BOD Meeting

November 14, 2016

**Attendance:** Dave Neff, Bryan Persing, Bonnie Lette, Tom Pescha, Don Bitnner, Wayne Lette Bob Gittinger, Dale Smith, Bob Frieden

**Country Lights at Lake Farm Park – 5:00 *pm* to 9:00 *pm***

Lake Geauga Module Group will be running November 25<sup>th</sup> through December 9<sup>th</sup>, 2016. Lake Erie N-Scale Society (LENS) will be running December 9<sup>th</sup> through December 23rd, 2016. Everyone is invited out to help with the runs.

**Toy & Train Show** – Lakeland Community College – December 18<sup>th</sup>, 2016 10:00 *am* – 3:30 *pm* (the main gym, possibly the auxiliary gym too)

**2016 How to Build a Model Railroad (Promo Day)** - We had a little lighter crowd this year but those that attended seemed to be very interested in what we had to explain and show them.

**Next year (2017)** we would like to get the presenters information earlier along with how many tables you require and if electricity is needed. Another discussion was to possibly have TV ads – Tom will create a proposal for further discussion.

**2017 Holiday Party** – January 14, 2017 with Social hour at *Noon* and Dinner at 1:00 *pm*. It has been decided to have Riders IGA to cater the event this year. The menu will be the same as usual – chicken, beef, ham, mash potatoes w/gravy, 2 vegetables, salad, dinner rolls and butter. Bob F and Bryan P are checking into the deserts of pie and cake.

**The cost per** division member and 1 guest will be \$5 per person; if you wish to invite more guests they would be \$10 each. The Chinese Gift Exchange is to be at a value of \$15 – please mark what scale or mark as any if it can be used for any scale.

**Payment** can be made at the December 2<sup>nd</sup> membership meeting or you can mail your check to Bonnie (her address is at the end of the Trainwire). All **RSVP** is to be made to Bonnie or Dave N by January 7<sup>th</sup>, 2017 if you are going to pay at the door. Payment is preferred to be made before the event, but an RSVP is a must by January 7<sup>th</sup>, 2017. We need to turn in the plate count for the food.

**Program & Bring N Brag – December** - Program -Craig Potter will be presenting a PowerPoint slide show of Entertainment Junction in Cincinnati. Bring N Brag – Animation – if you cannot remove from your layout – take pictures and enlarge them so you can hold up for everyone to see while you talk about the animation.

**Erie, PA** - We will be having a membership meeting in the Spring 2017; it will be either May or June depending on the dates that Lake Farm Park is holding their Railroads in the Park event. Some members of the Erie area are interested in holding a Promo Day in their area. This is a very good possibility but a location with enough space and parking must be found. It would be held in the spring but NOT spring of 2017. Too many details still need to be worked out.

**Youngstown** - They are holding a Model Train Flea Market on January 8<sup>th</sup> and April 9<sup>th</sup> 9:30 *am* – 3:30 *pm* in the new Salem Center Plex, Salem, Ohio. It was reported that this venue is excellent and only about a year old.

**Trainwire** – The articles and information has been coming to the *editor* late. It is causing us to request special treatment from the printer and this cannot continue. We would like to have articles / minutes to Lenny by Nov. 19<sup>th</sup>; then to Bonnie for proofreading by Nov. 20<sup>th</sup>; and finally to Tom by noon on Nov. 22<sup>nd</sup>. This month has Thanksgiving in it and the printer will most likely be shut down extra time. We are trying to make sure that the Trainwire arrives in time for our membership

**Hambden Town hall** – Dale Smith will be finalizing the agreement with the township for our meetings in 2017

**Submitted by:**  
Bonnie Lette, *Treasurer*



# Field Trip to Youngstown



**Rob's Trains Hobby Shop in Alliance, Ohio**

November being model railroad month, was a great time for three members of the NETS group led by Dave Hanna to make the trip to the Youngstown area to

see two great model train layouts. While the Sebring Model Railroad Club and the Youngstown Model Railroad Association have multiple open houses during the year, there is only one weekend a year when they

are both open on the same weekend. November 12<sup>th</sup>, 2016 was one of those special days and three interested members of the NETS made the trip on that day. Dave planned the trip and started by taking us to a



**The Sebring Model Railroad Club Layout, Impressive!**

quality hobby shop on Main Street in Alliance, Ohio, Rob's Trains. The shop has a wide variety of model trains and accessories available for sale and several tables of used trains for sale at reduced prices. With a large model railroad layout, the shop

was like a combination hobby shop and train show. It was an interesting interruption on our trip. The next stop was the Sebring layout which is located in the Sebring Station in Sebring, Ohio. The layout is very detailed with a city, oil refinery,

plenty of mountains and tunnels, interesting bridges, an engine facility, numerous industries and a very detailed army base. The visit lasted just less than an hour and we were able to observe a real train

*(Continued from page 7)*



**The Sebring Station Model**



**More of the Sebring Layout**





# Field Trip to Youngstown cont.....



Cherry Valley Coke Ovens



Upper Level

(Continued from page 6)

outside as it passed the station. After a short lunch break with Dave's sister Katherine and her step-son Carey, we made the short trip to see the Cherry

Valley coke ovens. The complex of 200 beehive coke ovens were constructed around 1866 by the Leetonia Iron and Coal Company which was later renamed the Cherry

Valley Iron Works. The Cherry Valley Coke Ovens site was placed on the National Register of Historic Places in 1993. The weather was perfect, bright and sunny with a

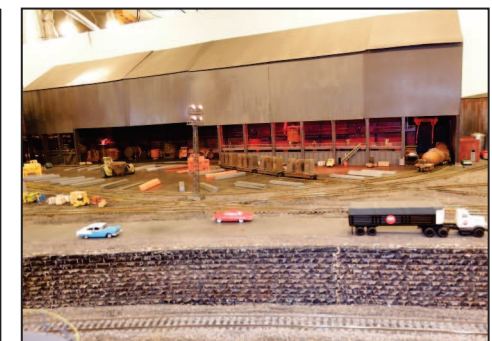


Lower Level of the Youngstown Model Railroad Association, Austintown, Ohio

slight crisp breeze. The three of us continued on to the second layout. The word **"Outstanding"** would be appropriate for the two story layout of the Youngstown Model Railroad Association in Austintown, Ohio. "O" gauge occupied the upper level and "HO" gauge occupied the lower

level. All three of the visitors are into HO, so we spent the lion's share of our time on the lower level. Words and pictures cannot capture the magnificence of this amazing layout, it is something you should experience in person. *A special note;* neither place is handicapped friendly,

but if you can get around with a small walker or a cane and do steps, the trip is well worth making. Our trip ended in a small diner in Parkman, Ohio well known for their delicious pie and coffee. - *The Editor*



Lower Level of the Youngstown Model Railroad Association, Austintown, Ohio



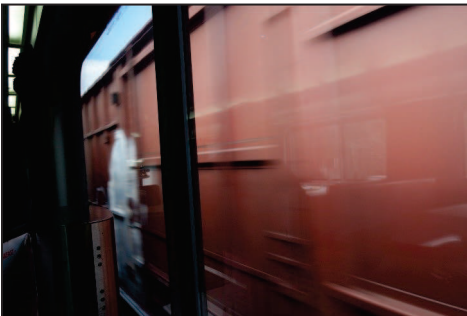
# Railfanning on Steroids



Ever since I was a little boy, I spent many hours watching trains rumbling down a pair of steel rails in numerous places along the tracks. But nothing can compare to the experience I had in October, 2016. My youngest son

and I grabbed the Empire builder out of Chicago, Illinois and headed for San Francisco via Seattle, Washington. With the freight traffic having the Right of Way, our Amtrak passenger train had to spend a lot of time on sidings waiting for freight trains to clear

the main line. From a comfortable seat in the lounge car, we saw more trains in an hour than I have seen in several days at the Depot, all while enjoying a sip of the grape. It's a whole different prospective compared to sitting in a car or on a wooden bench near a



set of stationary tracks. We passed many interesting sidings containing hundreds of engines and rolling stock, the covered hoppers being very prominent out west. Another exciting event was when two trains go screaming past your car on both sides in opposite directions at the same time. You can't see or hear them coming and

all of a sudden they burst into view in a blink of the eye and you can't help but be startled. I repeatedly referred to this occurrence as "*splitting the difference*". Portland, Oregon offered some great railfanning with its multiple marshaling yards and a wide variety of coastal port industries. One could easily see

numerous freight commodities being transferred, exchanged, delivered and shipped, by truck, train or boat. It was a great place to pick up several good ideas to model on my own railroad empire. The experience was a lot of fun and I can hardly wait until I can do it again. - *The Editor*







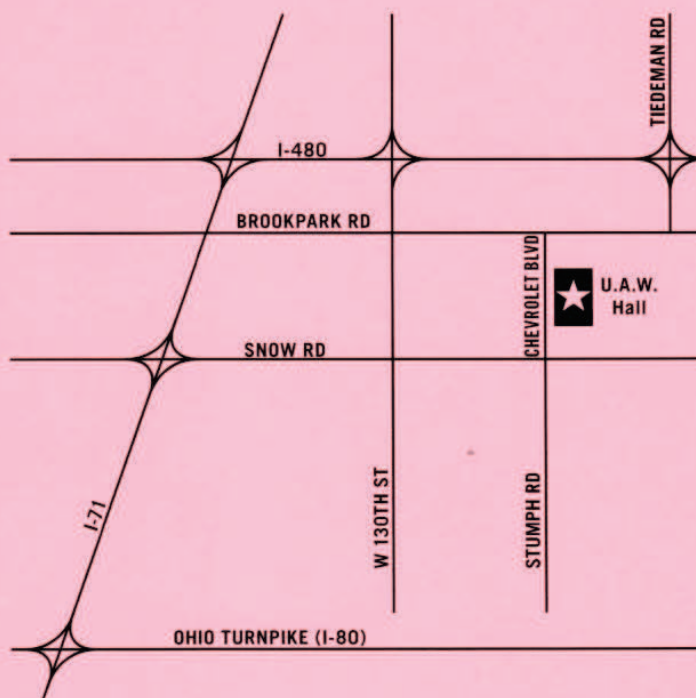
LAKE ERIE CHAPTER

LAKE ERIE CHAPTER  
 TRAIN COLLECTORS  
 ASSOCIATION  
**THANKSGIVING  
 TRAIN MEET**

**Saturday, November 26th, 2016**

U.A.W. Hall, 5615 Chevrolet Blvd., Cleveland, Ohio

- Free Parking
- Ground-Level Entrance
- Good Lighting
- Wide Aisles
- Refreshments Available
  
- New and Old Trains
- Parts, Repair Manuals, Price Guides, Books, etc.
- Train Videos
- Model Building Supplies and Kits
- Lionel, American Flyer, MTH, Williams, Weaver, LGB
- O, S, HO, N, Z & Large Scale



**NEXT LAKE ERIE CHAPTER MEET: MAY 6<sup>TH</sup>, 2017**

*All TCA National Division Chapter Rules will be enforced.*

**ADMISSION:** Adults \$6 • Children Free

Open to the Public 10 am - 3 pm

For More Information Contact: David Stachnik at [tcalakeerie@gmail.com](mailto:tcalakeerie@gmail.com) or 440-845-2700.



# Christmas Train and TOY SHOW



2016  2016  2016  2016  2016  2016

**REVSIED DATE!!!**

**BUY - SELL - TRADE**

**REVSIED DATE!!!**

**Sunday, December 18, 2016  
10:00 am to 3:30 pm**



*Santa Claus will be at the show from 12:30 pm to 2:00 pm. If you wish to take your child's picture with Santa, we ask that you make a \$5.00 donation to JDRF.*

**(440) 256-8141**

Email: [cleveshows@att.net](mailto:cleveshows@att.net)  
[www.cleveshows.com](http://www.cleveshows.com)

**Dealer info at:  
[www.christmastrainshow.com](http://www.christmastrainshow.com)**

**Held at:  
Lakeland Community College  
Athletic & Fitness Center (AFC) Main Gym  
7700 Clocktower Dr.  
Kirtland, Ohio 44094  
Interstate 90 and Rt. 306 (S.E. Corner)**



**Admission: Adults \$6.00 Family \$15.00  
Children (6-12) \$3.00, Under 6 Free  
Active Military Personnel Free**

**Toy Collection for needy families - New in-box toys only (unwrapped). Please no stuffed animals.  
JDRF - Stop by the LCJDWF table and help find a cure for Juvenile Diabetes with your donation.**



Dealer Redeemable this Show  
**\$25.00 Door Prize Certificate**  
Drawings at 11am, 1 pm, 3 pm



**Featuring:**

**300 + Tables \* One Floor \* Operating Train Layouts \* Free Parking**  
HO Trains - Structures - Accessories - Lionel, American Flyer, G-gauge, N scale trains  
Good Food - 24 hr. Police Security

**BUY - SELL - TRADE**





**Team Track****www.MCR5.org****Division 5 Officers****(Terms expire June 2018)**

Superintendent	Dave Neff	440-269-1229	<a href="mailto:Super@MCR5.org">Super@MCR5.org</a>
Asst. Superintendent	Bryan Persing		<a href="mailto:AstSuper@MCR5.org">AstSuper@MCR5.org</a>

**Division 5 Directors:** (Terms expire June 2018)

Don Bittner	440-257-7555	Robert Gittinger	440-525-0237
Wayne Lette	440-298-3075	Tom Pescha	216-470-5780

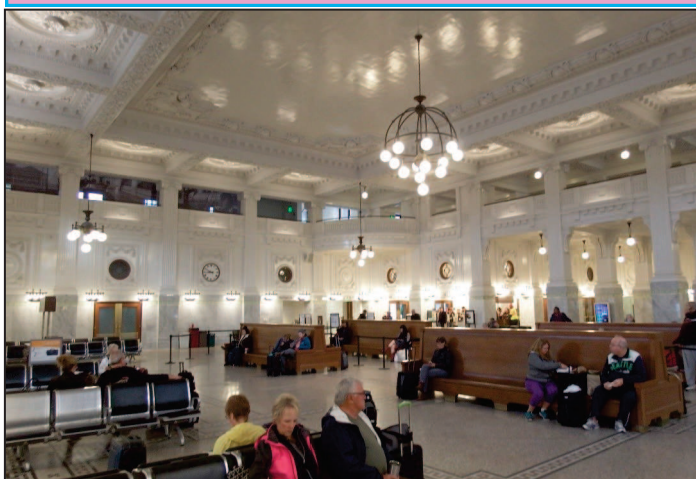
**Division 5 Board of Directors:** [BOD@MCR5.org](mailto:BOD@MCR5.org)**Division 5 Appointed Positions:** (Terms expire June 2018)

Treasurer	Bonnie Lette	440-298-3075	<a href="mailto:Treasurer@MCR5.org">Treasurer@MCR5.org</a>
Clerk	Matt Kross	440-729-3045	<a href="mailto:Clerk@MCR5.org">Clerk@MCR5.org</a>
Railfest Chairman	Jim Wendorf	440-357-8890	<a href="mailto:Railfest@MCR5.org">Railfest@MCR5.org</a>
Promo Day Coordinator	Rob Bowers Bob Frieden	(440) 942-3039	<a href="mailto:PromoDay@MCR5.org">PromoDay@MCR5.org</a>
Achievement Program	Mike Buehner	440-428-0137	<a href="mailto:AP@MCR5.org">AP@MCR5.org</a>
Contests	(Open Position)		<a href="mailto:Contest@MCR5.org">Contest@MCR5.org</a>
Auditors	Dennis Lloyd Tony Spena	440-255-2530	<a href="mailto:Audit@MCR5.org">Audit@MCR5.org</a>
Trainwire Editor	Lenny Kessler	440-417-6746	<a href="mailto:Trainwire@MCR5.org">Trainwire@MCR5.org</a>
Refreshments	Dan Chuppa	440-488-4179	<a href="mailto:Refreshments@MCR5.org">Refreshments@MCR5.org</a>
Membership Roster	Matt Kross	440-729-3045	<a href="mailto:Membership@MCR5.org">Membership@MCR5.org</a>
Webmaster	Wayne Lette	440-298-3075	<a href="mailto:Webmaster@MCR5.org">Webmaster@MCR5.org</a>
Company Store	Ted Wiese	440-256-5212	<a href="mailto:CompanyStore@MCR5.org">CompanyStore@MCR5.org</a>
Bring & Brag	(Open Position)		
Layout Tours	Mike Buehner	440-428-0137	<a href="mailto:layouttour@MCR5.org">layouttour@MCR5.org</a>



## Wanted

**T**he Trainwire is always looking for an interesting article. If you have taken a trip lately, seen something interesting trackside, have a particular view point on a railroad subject or just want to participate in the Modelers Corner; then we want to hear from you. Everyone wants to be kept current on Division information, but we all enjoy an interesting article written by a member of this organization. So take your pictures and article and send them to the Editor by email and share them will all of us.



## Notice

I will be compiling the next Trainwire on the 22nd of the month and any articles or reports that come in after the 22nd will probably be published in the following issue. - *The Editor*

# The Trainwire Newsletter

# Electronic Version

Publication of Division 5  
12049 Sperry Road  
Chesterland, Ohio 44026



## December, 2016

Division 5 Membership  
as of November 1st, 2016



# 113

## The Trainwire

*The Trainwire* is an official publication of Division 5 "The Western Reserve Division", Mid Central Region, of the National Model Railroad Association. It is published approximately once a month and mailed to all NMRA members residing in Lake, Geauga, and Ashtabula counties (Ohio) free of charge, as long as the Division has funds for mailing. Others wishing to receive it may do so for the annual fee of \$12.00 for a mailing or it is always available on the website (FREE).

Information regarding *The Trainwire*, Division 5, or the NMRA may be obtained by writing to 3257 Center Road, Perry, Ohio 44081 or sending an e-mail to [Trainwire@MCR5.org](mailto:Trainwire@MCR5.org). The Trainwire and Division 5 activities are funded by flea markets, raffles, contributions, and donations. All comments and opinions are welcome. Those views expressed in *The Trainwire* do not necessarily reflect the policies or opinions of the NMRA, the Mid Central Region or Division 5.

## The Western Reserve Division 5



[www.mcr5.org](http://www.mcr5.org)  
A non-profit educational organization



<b>Trainwire Editor:</b>	Lenny Kessler	3257 Center Rd. Perry, Ohio 44081	440-417-6746	<a href="mailto:Trainwire@mcr5.org">Trainwire@mcr5.org</a>
<b>Superintendent:</b>	Dave Neff	5479 Chestnut Hill Dr. Willoughby, Ohio 44094	440-269-1229	<a href="mailto:Super@mcr5.org">Super@mcr5.org</a>
<b>Asst. Super:</b>	Bryan Persing	2860 Loreto Drive Willoughby Hills OH 44094	330-715-3519	<a href="mailto:AstSuper@mcr5.org">AstSuper@mcr5.org</a>
<b>Treasurer:</b>	Bonnie Lette	17541 Thompson Rd. Thompson, Ohio 44086	440-298-3075	<a href="mailto:Treasurer@MCR5.org">Treasurer@MCR5.org</a>
<b>Clerk:</b>	Matt Kross	12049 Sperry Road Chesterland, Ohio 44026	440-729-3045	<a href="mailto:Clerk@mcr5.org">Clerk@mcr5.org</a>